

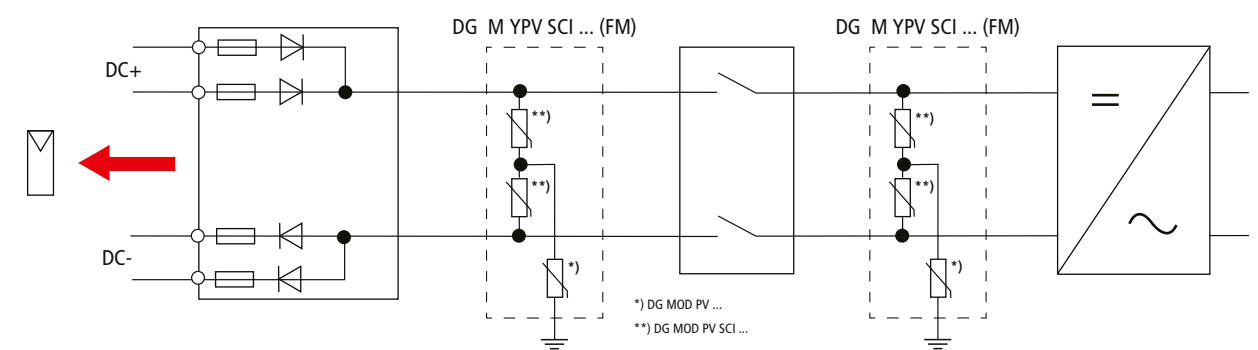
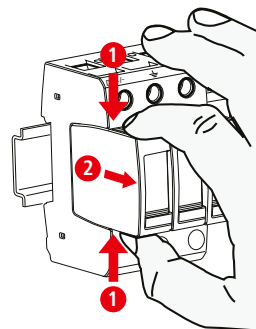
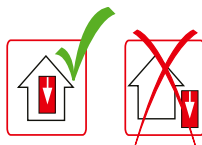
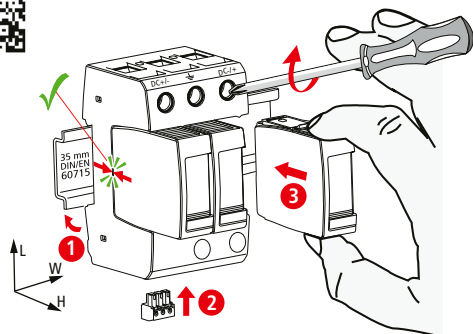
DEHNguard M YPV SCI ... (FM)

- DE Einbauanleitung
- GB Installation instructions
- IT Istruzioni di montaggio
- FR Instructions de montage
- NL Montagehandleiding
- ES Instrucciones de montaje
- PT Instruções de montagem
- DK Monteringsvejledning
- SE Monteringsanvisning
- FI Asennusohje
- GR Οδηγίες συναρμολόγησης
- PL Instrukcja montażu
- CZ Návod k montáži
- TR Montaj kılavuzu
- RU Инструкция по монтажу
- CN 安装说明
- HU Szerelési útmutató
- JP 設置説明書

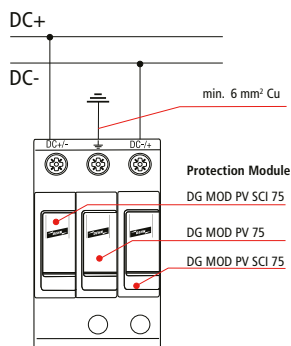


2 EN 50539-11...

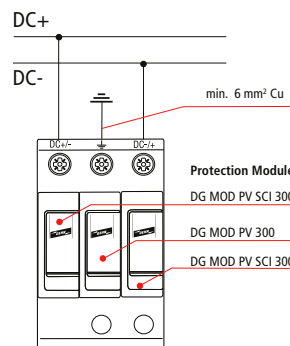
PZ 2 4 Nm



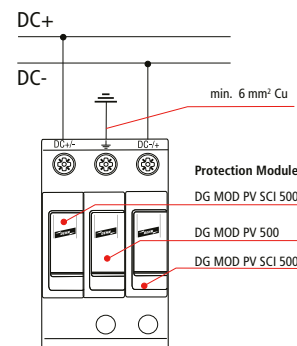
DG M YPV SCI 150 (FM)



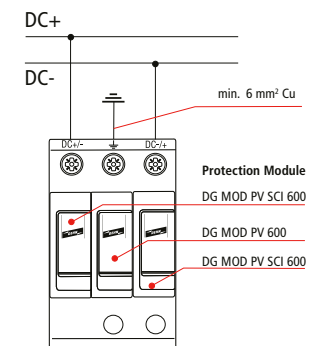
DG M YPV SCI 600 (FM)



DG M YPV SCI 1000 (FM)

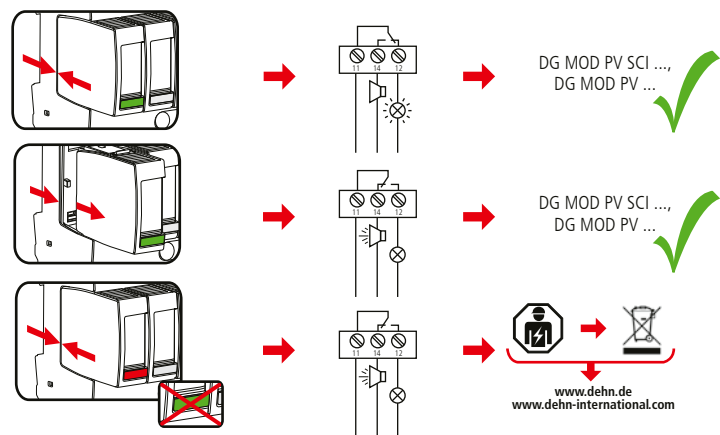


DG M YPV SCI 1200 (FM)



	DG M YPV SCI 150 (FM)	DG M YPV SCI 600 (FM)	DG M YPV SCI 1000 (FM)	DG M YPV SCI 1200 (FM)
$U_{CPV}$	≤ 150 V DC	≤ 600 V DC	≤ 1000 V DC	≤ 1200 V DC
$I_{total}$		40 kA (8/20)		30 kA (8/20)
$I_{max}$	20 kA (8/20)		25 kA (8/20)	
$I_{SCPV}$		10 kA		
$I_{PE, AC}$		≤ 500 μA		
$I_{PE, DC}$		≤ 25 μA		
$\theta^{\circ}$		-40°C ... +80°C		
$\phi$		5% ... 95%		
IP		20		
failure behavior		open circuit		
Ausfallverhalten		Abtrennung		
L x W x H		90 mm x 54 mm x 73 mm		

min. □ DC+ / -, DC- / +, ±	12 mm	12 mm	12 mm	1.5 mm <sup>2</sup>
max. □ DC+ / -, DC- / +, ±				25 mm <sup>2</sup>
□				16 mm <sup>2</sup> Cu  ≤ 15.5 mm



DEHNguard M YPV SCI ... FM	
$U_N / I_N$	AC: 250 V / 0.5 A
	DC: 250 V / 0.1 A 125 V / 0.2 A 75 V / 0.5 A
	max. 1.5 mm <sup>2</sup>

