



Serie DS-HP

200-1000

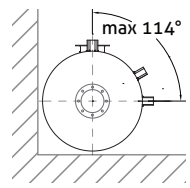
BOLLITORI PRODUZIONE ACS CON POMPA DI CALORE
HDW PRODUCTION TANKS WITH HEAT PUMP



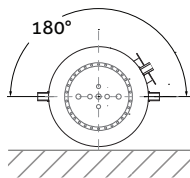
- ▷ Bollitore in acciaio al carbonio
Carbon steel tank
- ▷ Trattamento di vetrificazione liquida a 850 °C (DIN 4753)
Double internal vitrification treatment at 850 °C (DIN 4753)
- ▷ Sistema completo di protezione catodica (DIN 12438)
System equipped with cathodic protection (DIN 12438)
- ▷ Design anti-batterico per il riscaldamento ACS
Antibacterial design for DHW heating
- ▷ Ingombro ridotto
Small footprint
- ▷ Rivestimento in PVC effetto cuoio o metallico (su richiesta)
PVC cover with leather effect
- ▷ Garanzia di 5 anni
5-years Warranty

DIMENSIONI [mm] DIMENSIONS [mm]

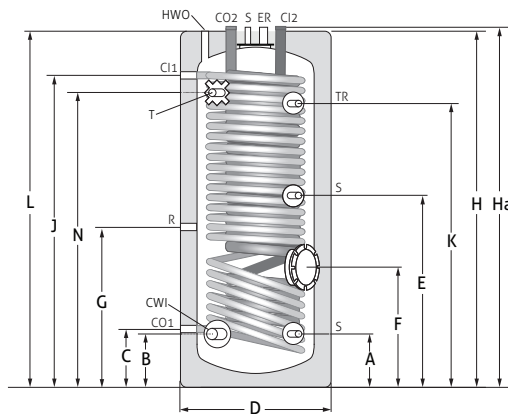
DS-HP 200-500



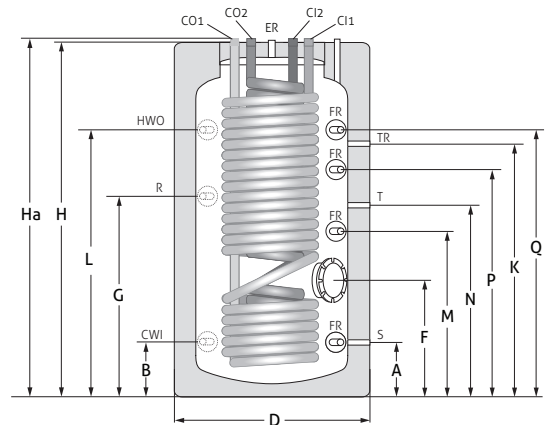
DS-HP 750-1000



DS-HP 200-500



DS-HP 750-1000



Quote / Dimensions		DS-HP 200	DS-HP 300	DS-HP 500	DS-HP 750	DS-HP 1000
A	Sensore - S / Sensor	192 [1/2"]	223 [1/2"]	241 [1/2"]	312 [1/2"]	312 [1/2"]
A	Connessione libera - FR / Free Connection	-	-	-	312 [1/2"]	312 [1/2"]
B	Ingresso Acqua Fredda - CWI / Cold Water Inlet	202 [1"]	223 [1"]	236 [1"]	312 [1 1/2"]	312 [1 1/2"]
C	Uscita Serpentino Principale - CO1 / Main Coil Outlet	247 [1 1/2"]	223 [1 1/2"]	242 [1 1/2"]	1851 [1 1/4"]	2101 [1 1/4"]
D	Diametro Esterno Ø / External Diameter Ø	600	630	750	1000	1000
E	Sensore - S / Sensor	759 [1/2"]	883 [1/2"]	911 [1/2"]	-	-
F	Flangia inferiore - F / Lower Flange	422 [Ø140]	453 [Ø140]	471 [Ø140]	550 [Ø170]	550 [Ø170]
G	Ricircolo - R / Recirculation	597 [1"]	808 [1"]	826 [1"]	892 [1 1/2"]	1142 [1 1/2"]
H	Altezza / Height	1550	1620	1700	1821	2071
Ha	Altezza Totale / Total Height	1600	1670	1750	1851	2101
J	Entrata Serpentino Principale - CI1 / Main Coil Inlet	1287 [1 1/2"]	1393 [1 1/2"]	1411 [1 1/2"]	1851 [1 1/4"]	2101 [1 1/4"]
K	Termometro - TR / Thermometer	1297 [1/2"]	1353 [1/2"]	1381 [1/2"]	1272 [1/2"]	1522 [1/2"]
L	Uscita Acqua Calda - HWO / Hot Water Outlet	1550 [1"]	1620 [1"]	1710 [1"]	1402 [1 1/2"]	1652 [1 1/2"]
M	Connessione libera - FR / Free Connection	-	-	-	742 [1 1/2"]	992 [1 1/2"]
N	Termostato - T / Thermostat	1297 [1/2"]	1363 [1/2"]	1381 [1/2"]	977 [1/2"]	1227 [1/2"]
P	Connessione libera - FR / Free Connection	-	-	-	1097 [1 1/2"]	1347 [1 1/2"]
Q	Connessione libera - FR / Free Connection	-	-	-	1402 [1 1/2"]	1652 [1 1/2"]



SPECIFICHE TECNICHE TECHNICAL SPECIFICATIONS

SERBATOIO / TANK:

MATERIALE: Acciaio al carbonio secondo EN 10130, spessore lamiera 2.5 ÷ 4 mm a seconda della taglia. Saldatura automatica MAG.
MATERIAL: Carbon steel according to EN 10130, sheet thickness 2.5÷4 mm depending on the size. Automatic MAG welding.

PROTEZIONE ANTI-CORROSIONE: Trattamento di vetrificazione liquida a 850 °C, secondo DIN 4753, e anodo di magnesio (EN 12438).
ANTI-CORROSION PROTECTION: Liquid enameling treatment at 850°C, according to DIN 4753, and magnesium anode (EN 12438).

PRESSIONE MAX. OPERATIVA / MAX. WORKING PRESSURE: 10 bar
PRESSIONE MAX. COLLAUDO / MAX. TEST PRESSURE: 15 bar
TEMPERATURA MAX. OPERATIVA / MAX. WORKING TEMPERATURE: 95 °C
DIAMETRO FLANGIA SUPERIORE / UPPER FLANGE DIAMETER: 200-500: Ø170 mm; 750-1000: Ø620 mm;
DIAMETRO FLANGIA INFERIORE / LOWER FLANGE DIAMETER: 200-500: Ø140 mm; 750-1000: Ø170 mm;

SERPENTINI / COILS:

MATERIALE: Tubo in acciaio, DC-01.
MATERIAL: Steel pipe, DC-01.

PROTEZIONE ANTI-CORROSIONE: Per versioni DS-HP 200-500: Trattamento di vetrificazione liquida a 850 °C;
Per versioni DS-HP 750-1000: Rivestimento in resina epossidica;

ANTI-CORROSION PROTECTION: For versions DS-HP 200-500: Liquid enameling treatment at 850°C;
For versions DS-HP 750-1000: Epoxy resin coating.

PRESSIONE MAX. OPERATIVA / MAX. WORKING PRESSURE: 15 bar
PRESSIONE MAX. COLLAUDO / MAX. TEST PRESSURE: 25 bar
TEMPERATURA MAX. OPERATIVA / MAX. WORKING TEMPERATURE: 130 °C

ISOLAZIONE / INSULATION:

MATERIALE: Per versioni 200-500: schiuma di poliuretano rigida, densità 52 kg/m³, spessore 55 mm;
Per versioni 750-1000, schiuma di poliuretano flessibile e rimovibile, densità 20 kg/m³, spessore 100 mm.

MATERIAL: For versions 200-500: rigid polyurethane foam, density 52 kg/m³, thickness 55 mm;
For versions 750-1000, flexible and removable polyurethane foam, density 20 kg/m³, thickness 100 mm.

RIVESTIMENTO / COVER:

MATERIALE: PVC morbido con effetto cuoio, colore rosso.
MATERIAL: Soft red-coloured PVC with leather effect.

Versione Version	Altezza Totale Total Height	Diámetro Esterno External Diameter	Capacità Totale Total Capacity	Capacità Serp. Principale Main Coil Capacity	Capacità Serp. Solare Inner Coil Capacity	Area Serpentina Principale Main Coil Area	Area Serpentina Solare Inner Coil Area	Sezione Serpentina Principale Main Coil Cross Section	Dim. Serpentina Solare Solar Coil Cross Section	Spessore Isolamento Insulation Thickness	Spessore Serbatoio Tank Thickness	Peso a vuoto Empty Weight	Codice Prodotto Product Code	Prezzo (IVA escl.) Price (VAT excl.)
	m	m	L	L	L	m ²	m ²			mm	mm	kg		
DS-HP 200	1.60	0.60	172	22.68	5.70	2.60	1.20	1"1/4	3/4"	55	2.5	138	B2.HP.200	
DS-HP 300	1.67	0.63	256	31.75	6.84	3.60	2.20	1"1/4	3/4"	55	2.5	164	B2.HP.300	
DS-HP 500	1.75	0.75	423	39.69	9.12	4.20	2.60	1"1/4	3/4"	55	2.5	220	B2.HP.500	
DS-HP 750	1.85	1.00	696	34.02	7.27	6.00	2.60	1"1/4	1"	100	4.0	320	B2.HP.750	
DS-HP 1000	2.10	1.00	803	45.36	9.92	6.00	2.60	1"1/4	1"	100	4.0	350	B2.HP.1000	